

Triton's PLTW

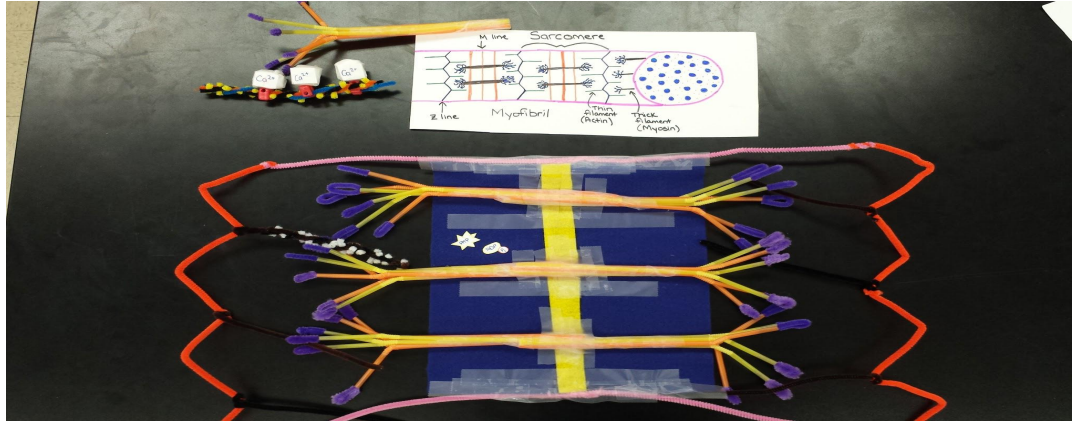
Gateway, Biomedical, Engineering,





PROJECT LEAD THE WAY

PLTW



- Comprehensive approach to STEM Education.
- Activity-, project-, and problem-based curriculum
- Middle school, High School programs

Gateway Design and Modeling - 7th grade



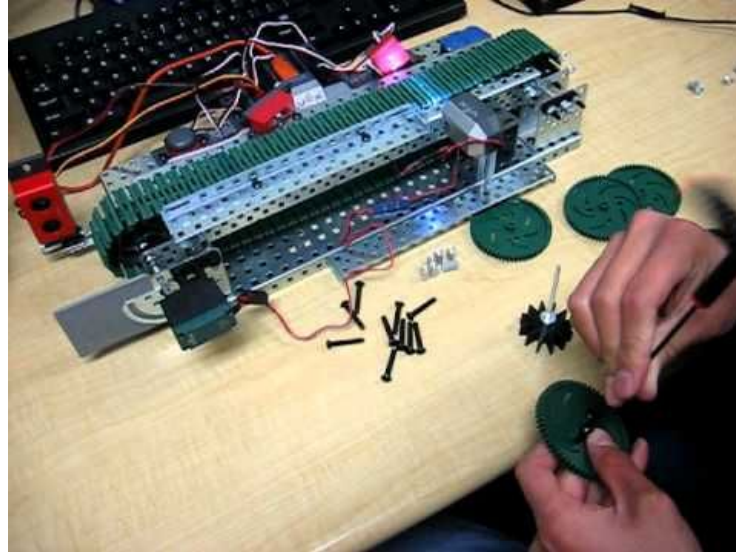
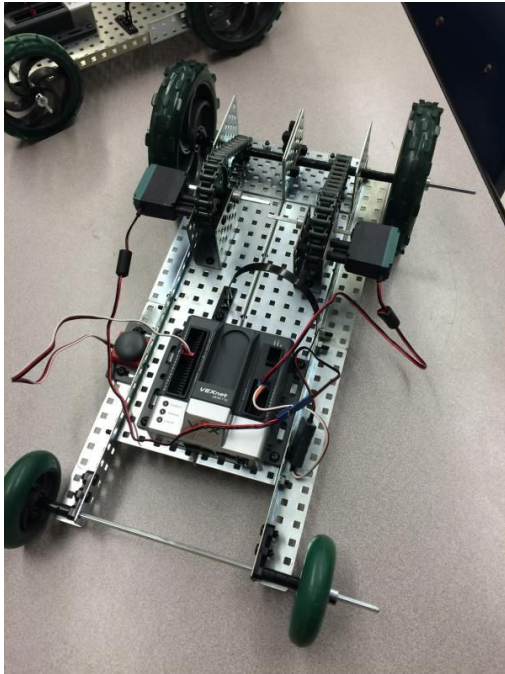
In class we:

- Use Autodesk Inventor to make items in 3-D
- Learn to measure
- Practice Teamwork
- Use Geometry
- Make skimmers to practice math measuring skills
- Use the 3-D printer to print some of the designs that we make in Autodesk.



Students are racing the skimmers that they made, practicing their measurement skills.

Gateway - Automation & Robotics 8th grade





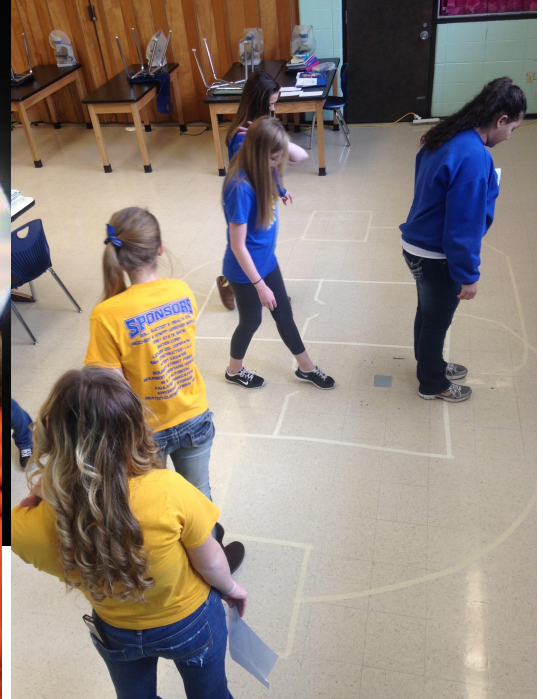
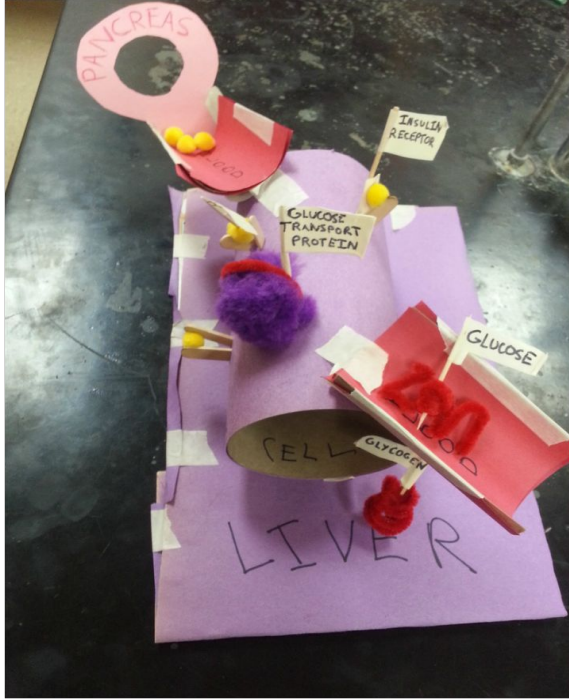
PROJECT LEAD THE WAY
PLTW

Biomedical Science

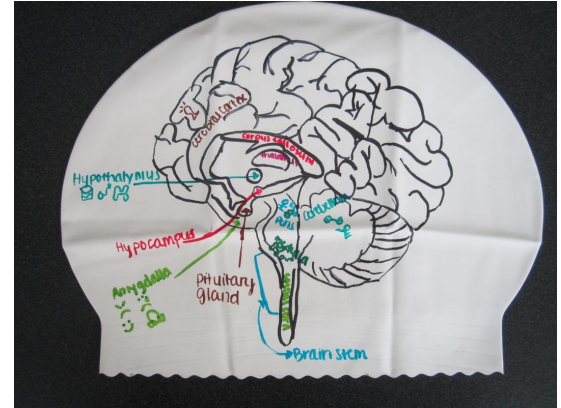
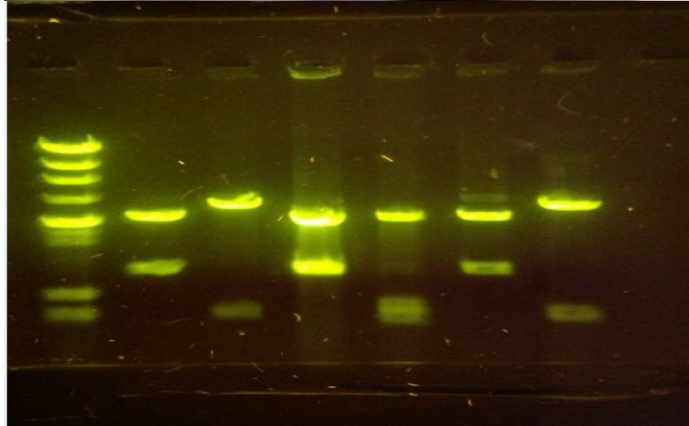
- Rigorous and relevant
- Case-based scenarios
- four-course PLTW Biomedical Science sequence
 - PBS; HBS; MI; future option - BI
- Students act as biomedical professionals as they study the concepts of human medicine, physiology, genetics, microbiology, and public health.
- End of Course Assessment



PBS- Principles of Biomedical Science



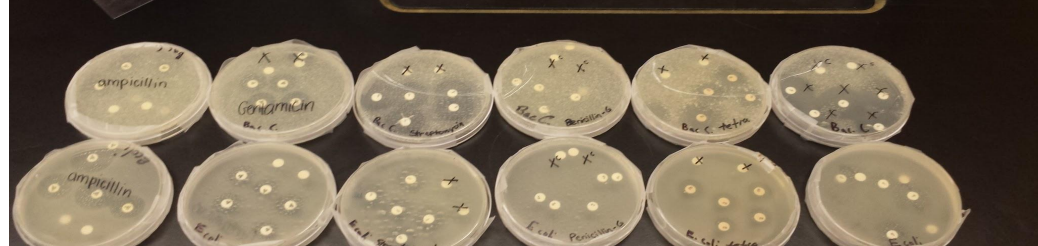
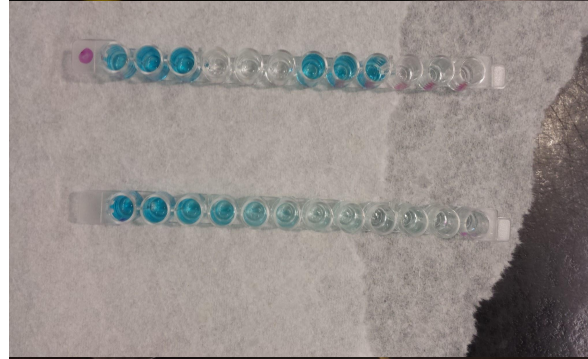
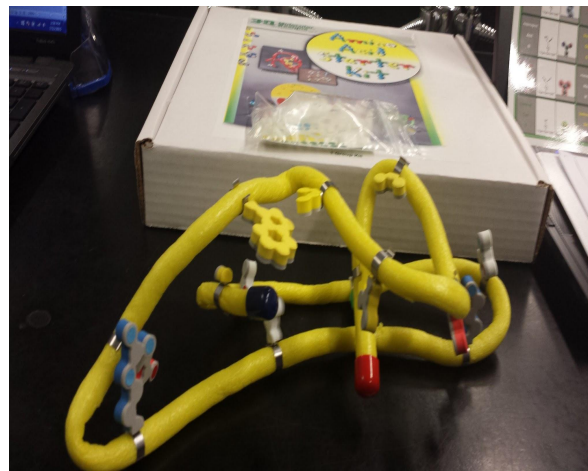
HBS- Human Body Systems



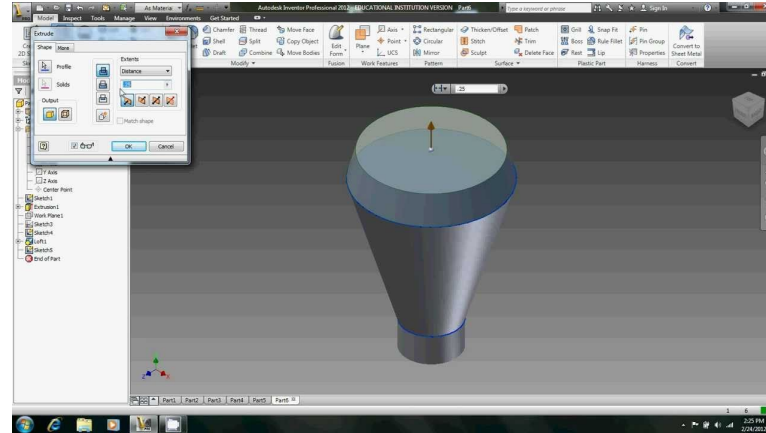
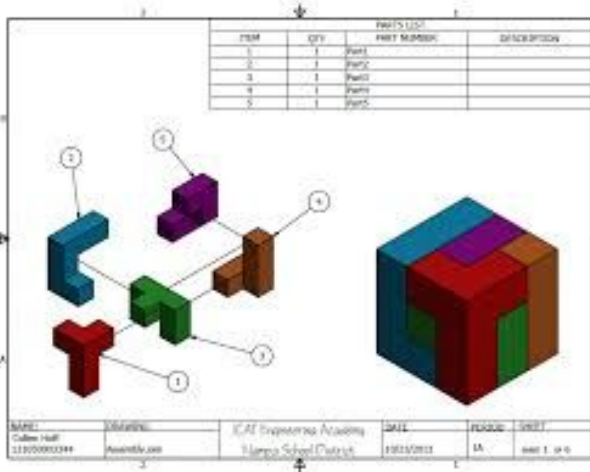
MI- Medical Interventions



- immunology
- surgery
- genetics
- Pharmacology,
- medical devices,
- diagnostics



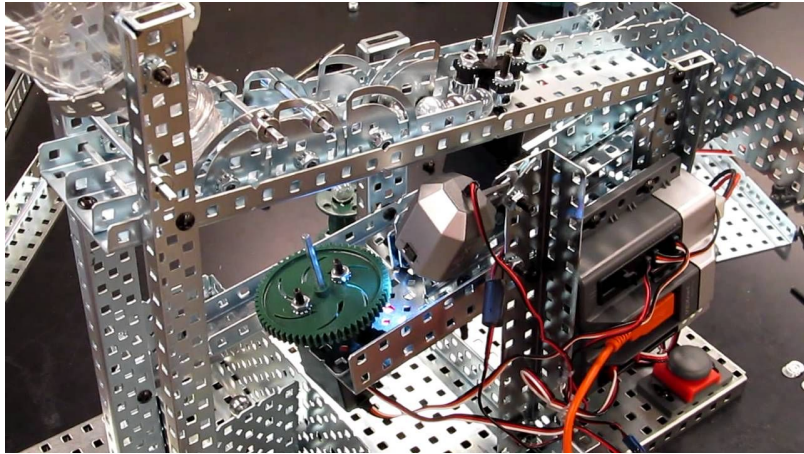
Introduction to Engineering Design (IED)



Next Year:

Adding “Principles of Engineering”

Project Below: Marble Sorting Machine



Project Below: Ping Pong Shooter

